

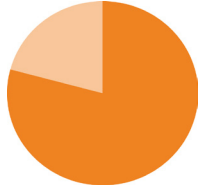
HUNGER IN OKLAHOMA

OKLAHOMA STATISTICS



15.8%

OVERALL STATE FOOD INSECURITY RATE



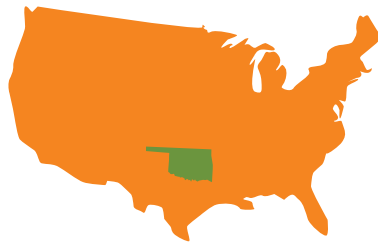
22.2%

STATE CHILD FOOD INSECURITY RATE



OKLAHOMA CONSISTENTLY RANKS AS

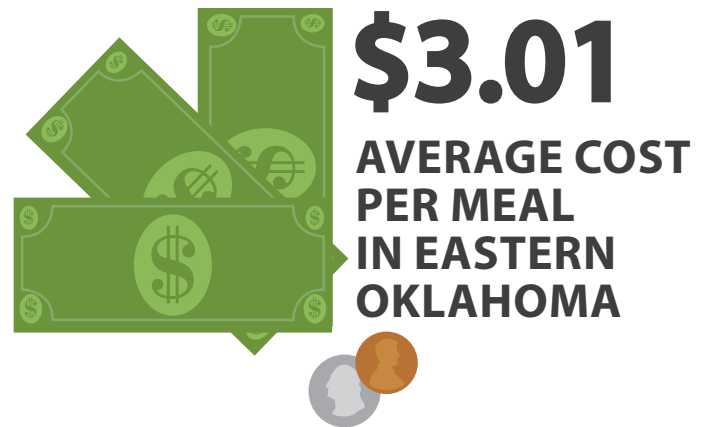
ONE OF ELEVEN



STATES WHERE FOOD INSECURITY IS ABOVE THE NATIONAL AVERAGE

621,370
TOTAL FOOD INSECURE PEOPLE

3,943,079
2017 OKLAHOMA POPULATION



"I can draw a bath.

I can read a bedtime story.

But I can't create food out of thin air."

- Tulsa Public Schools paraprofessional and unexpected custodian of three grandchildren.

These quick fact sheets include data from Feeding America's Map the Meal Gap, the Bureau of Labor Statistics, and the United States Census Bureau, compiled by the Community Food Bank of Eastern Oklahoma.



Fighting Hunger, Feeding Hope

FOOD BANK

Community **FOOD BANK** of Eastern Oklahoma



Gundersen, C., A. Dewey, M. Kato, A. Crumbaugh & M. Strayer. *Map the Meal Gap 2019: A Report on County and Congressional District Food Insecurity and County Food Cost in the United States in 2017.* Feeding America, 2019.

Updated 2/20



COUNTY QUICK FACTS

TULSA

642,781

2017 POPULATION

COUNTY 11,350,574

MEALS DISTRIBUTED FY2019



7.2%

SENIORS LIVING IN
POVERTY

3.3%

UNEMPLOYMENT
RATE AVERAGE

\$3.11

AVERAGE COST
PER MEAL

“There are many people in our community who hit a rough patch at times. One box of food at the end of a month won’t solve a financial crisis, but it may help someone and their family eat more securely while they work through that crisis.” - Sue Catron



FOOD INSECURITY RATE **15.8%**
100,610 TOTAL FOOD INSECURE PEOPLE



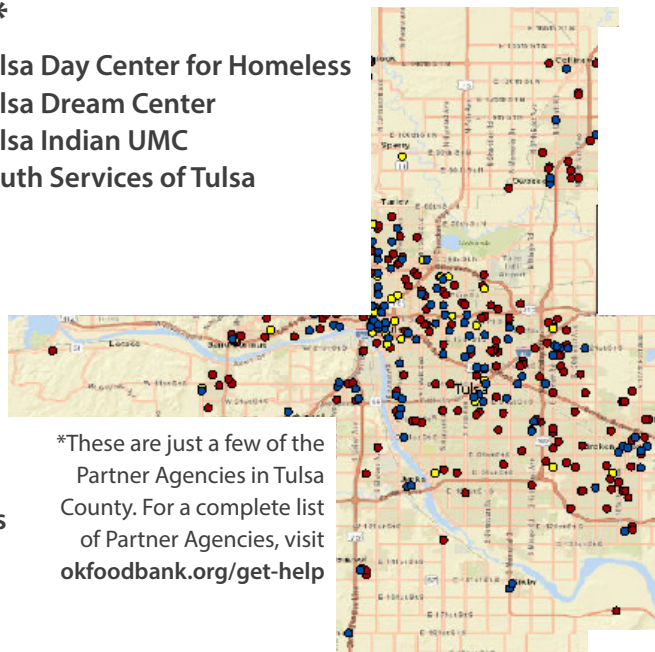
21.6% CHILD FOOD INSECURITY RATE
35,120 TOTAL FOOD INSECURE CHILDREN

126 PARTNER AGENCIES*

- Agape Bible Fellowship
- All Souls Unitarian Church
- Bixby Community Outreach Center
- Broken Arrow Neighbors
- CAP
- Catholic Charities
- Crosstown Church of Christ
- DVIS
- Emergency Infant Services
- Family and Children’s Services
- First Baptist Church
- Harvest House
- Hudson Villas
- Iglesia Hispana Victory
- Iron Gate
- Islamic Society of Tulsa

- Jenks Church of Christ
- John 3:16 Mission
- Kendall Whittier Food Pantry
- Loaves and Fishes
- Neighbors Along the Line
- Neighbors in Need
- Nueva Esperanza UMC
- Oasis Inc., Adult Day Services
- Owasso Community Resources
- People’s Pantry of Tulsa
- Restore Hope Ministries
- Salvation Army
- Sand Springs Community Services
- South Tulsa Community House
- Springdale Baptist Church
- Tulsa CARES

- Tulsa Day Center for Homeless
- Tulsa Dream Center
- Tulsa Indian UMC
- Youth Services of Tulsa



*These are just a few of the Partner Agencies in Tulsa County. For a complete list of Partner Agencies, visit okfoodbank.org/get-help

For a map of Partner Agencies in your county with contact information and hours of operation, go to okfoodbank.org/get-help

These quick fact sheets include data from Feeding America’s Map the Meal Gap, the Bureau of Labor Statistics, and the United States Census Bureau, compiled by the Community Food Bank of Eastern Oklahoma.



Fighting Hunger, Feeding Hope



Community FOOD BANK of Eastern Oklahoma



www.okfoodbank.org

Gundersen, C., A. Dewey, M. Kato, A. Crumbaugh & M. Strayer. *Map the Meal Gap 2019: A Report on County and Congressional District Food Insecurity and County Food Cost in the United States in 2017.* Feeding America, 2019.

Updated 2/20