

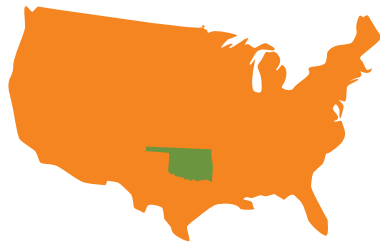
HUNGER IN OKLAHOMA

OKLAHOMA STATISTICS



OKLAHOMA CONSISTENTLY RANKS AS

ONE OF ELEVEN

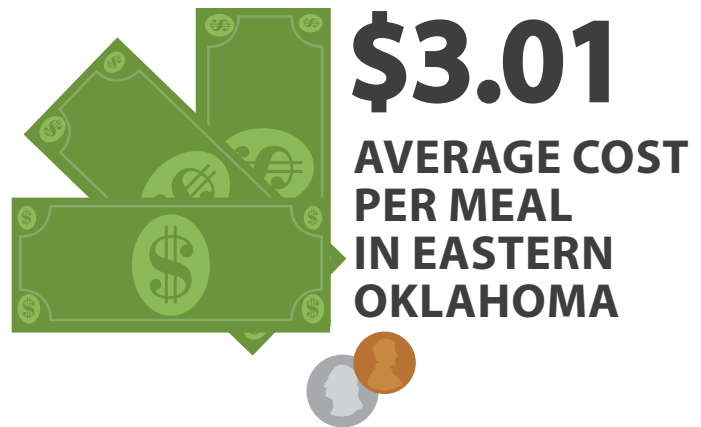


STATES WHERE FOOD INSECURITY IS ABOVE THE NATIONAL AVERAGE

621,370
TOTAL FOOD INSECURE PEOPLE

3,943,079
2017 OKLAHOMA POPULATION

**"I can draw a bath.
I can read a bedtime story.
But I can't create food out of thin air."**
- Tulsa Public Schools paraprofessional and unexpected custodian of three grandchildren.



These quick fact sheets include data from Feeding America's Map the Meal Gap, the Bureau of Labor Statistics, and the United States Census Bureau, compiled by the Community Food Bank of Eastern Oklahoma.



Fighting Hunger, Feeding Hope



Community **FOOD BANK** of Eastern Oklahoma



Gundersen, C., A. Dewey, M. Kato, A. Crumbaugh & M. Strayer. *Map the Meal Gap 2019: A Report on County and Congressional District Food Insecurity and County Food Cost in the United States in 2017.* Feeding America, 2019.

Updated 2/20



COUNTY QUICK FACTS

OSAGE COUNTY

47,311
2017 POPULATION

526,062
MEALS DISTRIBUTED FY2019

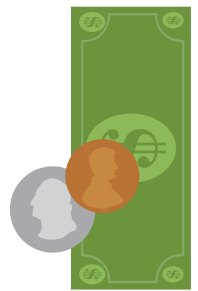


10.9%
SENIORS LIVING IN
POVERTY

4.3%
UNEMPLOYMENT
RATE AVERAGE

\$3.12
AVERAGE COST
PER MEAL

“There are many people in our community who hit a rough patch at times. One box of food at the end of a month won’t solve a financial crisis, but it may help someone and their family eat more securely while they work through that crisis.” - Sue Catron



FOOD INSECURITY RATE **16.1%**
7,650 TOTAL FOOD INSECURE PEOPLE



23.3% **CHILD FOOD INSECURITY RATE**
2,520 TOTAL FOOD INSECURE CHILDREN



13 PARTNER AGENCIES



Calvary Temple Assembly of God
Christ’s Cupboard/Pawhuska
Dividing Bread Ministry
Heaven Sent
Help Works, Inc.

Hulah Lake Senior Center
Lighthouse Family Worship
Center
Pawhuska Backpack
Pearl’s Hope

Prue Senior Citizens
Shidler Area Ministerial Alliance
Shirley Cook Memorial Food Bank
Youth Services of Osage County

For a map of Partner Agencies in your county with contact information and hours of operation, go to okfoodbank.org/get-help

These quick fact sheets include data from Feeding America’s Map the Meal Gap, the Bureau of Labor Statistics, and the United States Census Bureau, compiled by the Community Food Bank of Eastern Oklahoma.



Gundersen, C., A. Dewey, M. Kato, A. Crumbaugh & M. Strayer. *Map the Meal Gap 2019: A Report on County and Congressional District Food Insecurity and County Food Cost in the United States in 2017.* Feeding America, 2019.

www.okfoodbank.org

Updated 2/20