

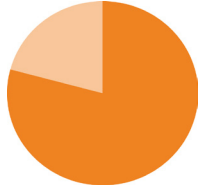
HUNGER IN OKLAHOMA

OKLAHOMA STATISTICS



15.8%

OVERALL STATE FOOD INSECURITY RATE



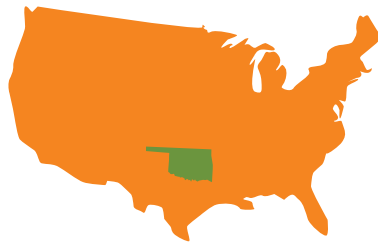
22.2%

STATE CHILD FOOD INSECURITY RATE



OKLAHOMA CONSISTENTLY RANKS AS

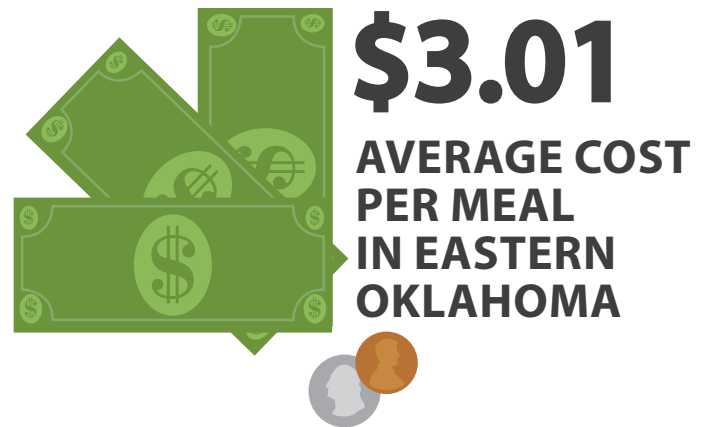
ONE OF ELEVEN



STATES WHERE FOOD INSECURITY IS ABOVE THE NATIONAL AVERAGE

621,370
TOTAL FOOD INSECURE PEOPLE

3,943,079
2017 OKLAHOMA POPULATION



"I can draw a bath.

I can read a bedtime story.

But I can't create food out of thin air."

- Tulsa Public Schools paraprofessional and unexpected custodian of three grandchildren.

These quick fact sheets include data from Feeding America's Map the Meal Gap, the Bureau of Labor Statistics, and the United States Census Bureau, compiled by the Community Food Bank of Eastern Oklahoma.



Fighting Hunger, Feeding Hope

FOOD BANK

Community **FOOD BANK** of Eastern Oklahoma



Gundersen, C., A. Dewey, M. Kato, A. Crumbaugh & M. Strayer. *Map the Meal Gap 2019: A Report on County and Congressional District Food Insecurity and County Food Cost in the United States in 2017.* Feeding America, 2019.

Updated 2/20



COUNTY QUICK FACTS

MUSKOGEE COUNTY

69,084
2017 POPULATION
492,024
MEALS DISTRIBUTED FY2019

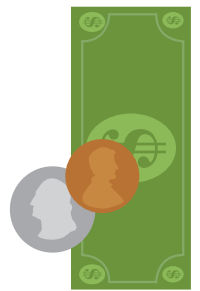


12.1%
SENIORS LIVING IN
POVERTY

4%
UNEMPLOYMENT
RATE AVERAGE

\$2.78
AVERAGE COST
PER MEAL

“There are many people in our community who hit a rough patch at times. One box of food at the end of a month won’t solve a financial crisis, but it may help someone and their family eat more securely while they work through that crisis.” - Sue Catron



FOOD INSECURITY RATE **18.4%**
12,810 TOTAL FOOD INSECURE PEOPLE



25.5% **CHILD FOOD INSECURITY RATE**
4,340 TOTAL FOOD INSECURE CHILDREN

19 PARTNER AGENCIES

- Ark of Faith Foundation
- Boulevard Christian Church
- Catholic Charities/Muskogee
- Central Church of Christ
- Chandler Road Church of Christ
- Eastern Heights Baptist Church
- Faith Love Community Outreach
- First Baptist Church/Muskogee
- Gospel Rescue Mission
- Green Country BHCS
- Heavenly Hope Church
- Monarch, Inc.
- Presbyterian Church of Muskogee
- Ray’s House
- Salvation Army/Muskogee
- St. Paul UMC
- Warner Community Food Pantry
- The Warrior Pantry
- Women in Safe Homes

For a map of Partner Agencies in your county with contact information and hours of operation, go to okfoodbank.org/get-help

These quick fact sheets include data from Feeding America’s Map the Meal Gap, the Bureau of Labor Statistics, and the United States Census Bureau, compiled by the Community Food Bank of Eastern Oklahoma.



Gundersen, C., A. Dewey, M. Kato, A. Crumbaugh & M. Strayer. *Map the Meal Gap 2019: A Report on County and Congressional District Food Insecurity and County Food Cost in the United States in 2017.* Feeding America, 2019.

www.okfoodbank.org
Updated 2/20